

# **Family Day Carers as Parent Mentors: The Partners in Parenting Program**

## **Presenters:**

**Greta Hundley Manager Family Programs  
Family Child Care Services Central Coast**

**Liz Shanahan, Carer Partners in Parenting  
Mentor**


# **Seminar Outline**

- I. Introductions**
- II. Background to the PiP Project**
- III. How PiP operates**
- IV. PiP Evaluation with Family Action Centre, Newcastle Uni**
- v. PiP Case Studies**
- VI. Feedback and Discussion**
- VII. Introduce PiP Training Resource**

# **Background to the PiP project**

- **What is the Partners in Parenting Program?**
- **Initiative of Wyong Shire Council –**
  - **Recognition of value of child care for vulnerable families**
  - **Using child care centres to model positive adult-child interactions**
- **Family Child Care Services Central Coast -Wyong Family Day Care**
- **Funding from National Community Crime Prevention program – evaluation and partnership with Newcastle Uni Family Action Centre**
- **Recruitment and training of Family Day Care Carers as mentors**

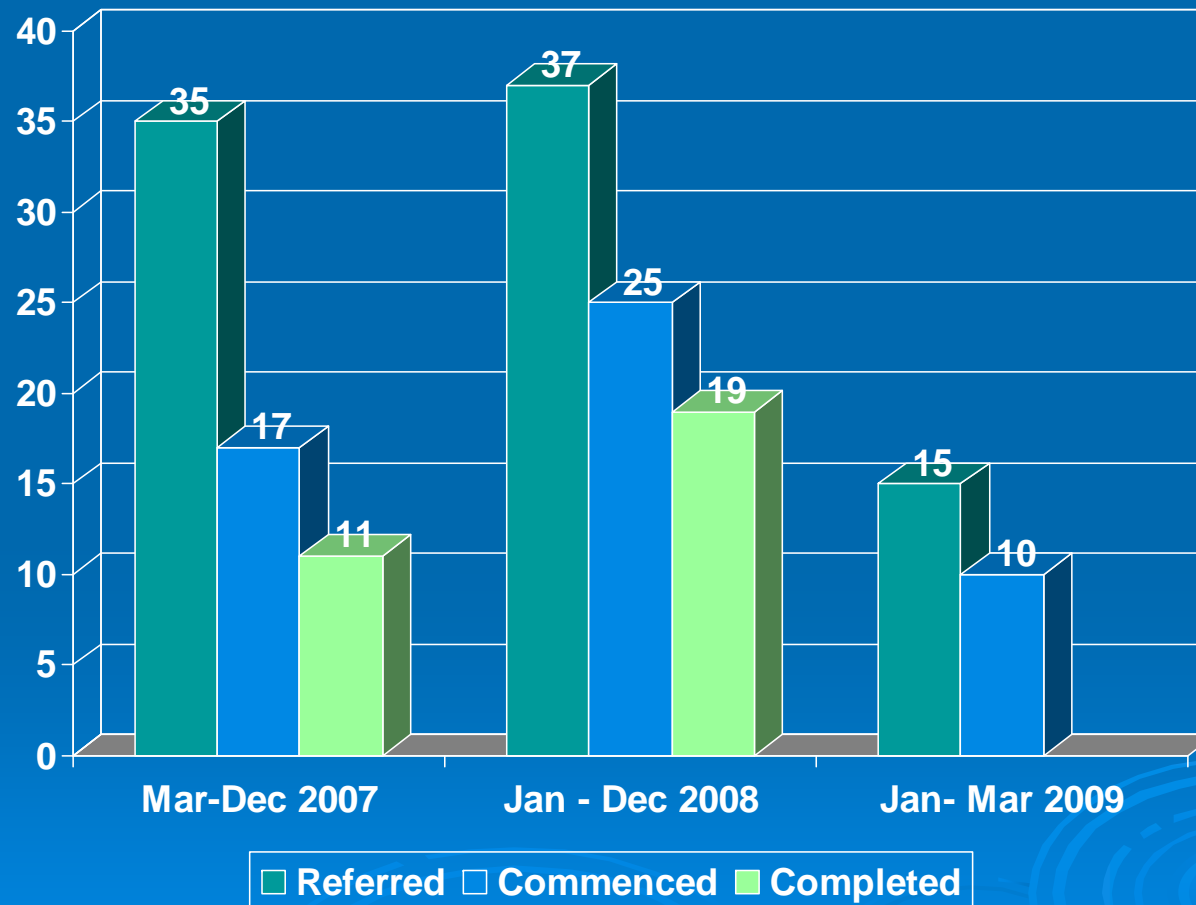
# How PiP Operates

- **Referral**
  - **Home visit for registration, development of goals**
  - **Matching with/ joint visit to mentor**
  - **Progress of PiP**
    - **6 to 8 weekly visits**
    - **Goals**
    - **“Homework”**
  - **Evaluation**
- 

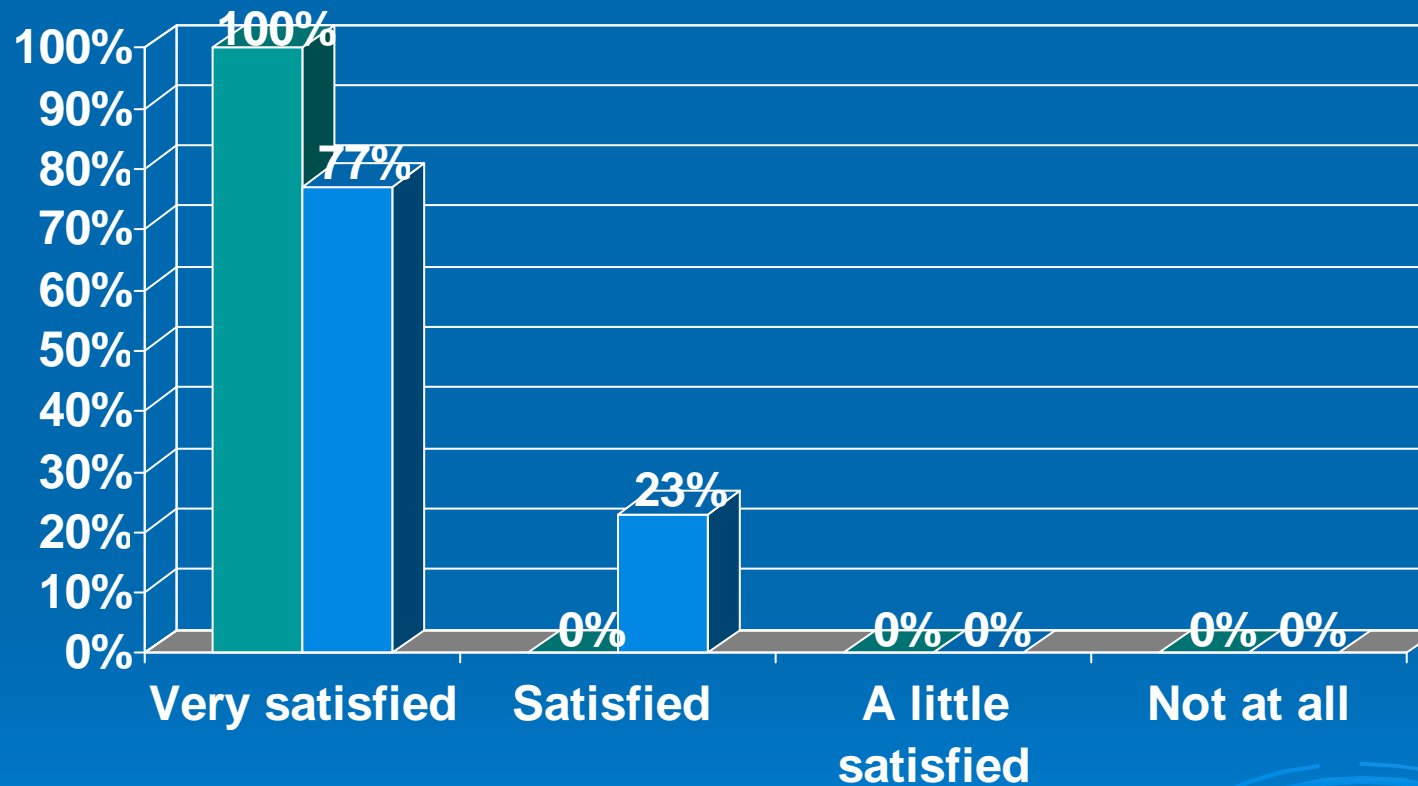
# Evaluation with Family Action Centre

- **Results: March 2007 to March 2009**
  - ① **How much has PiP done?**
  - ① **How well did PiP do it?**
  - ① **Is anyone better off?**

# Number of referrals

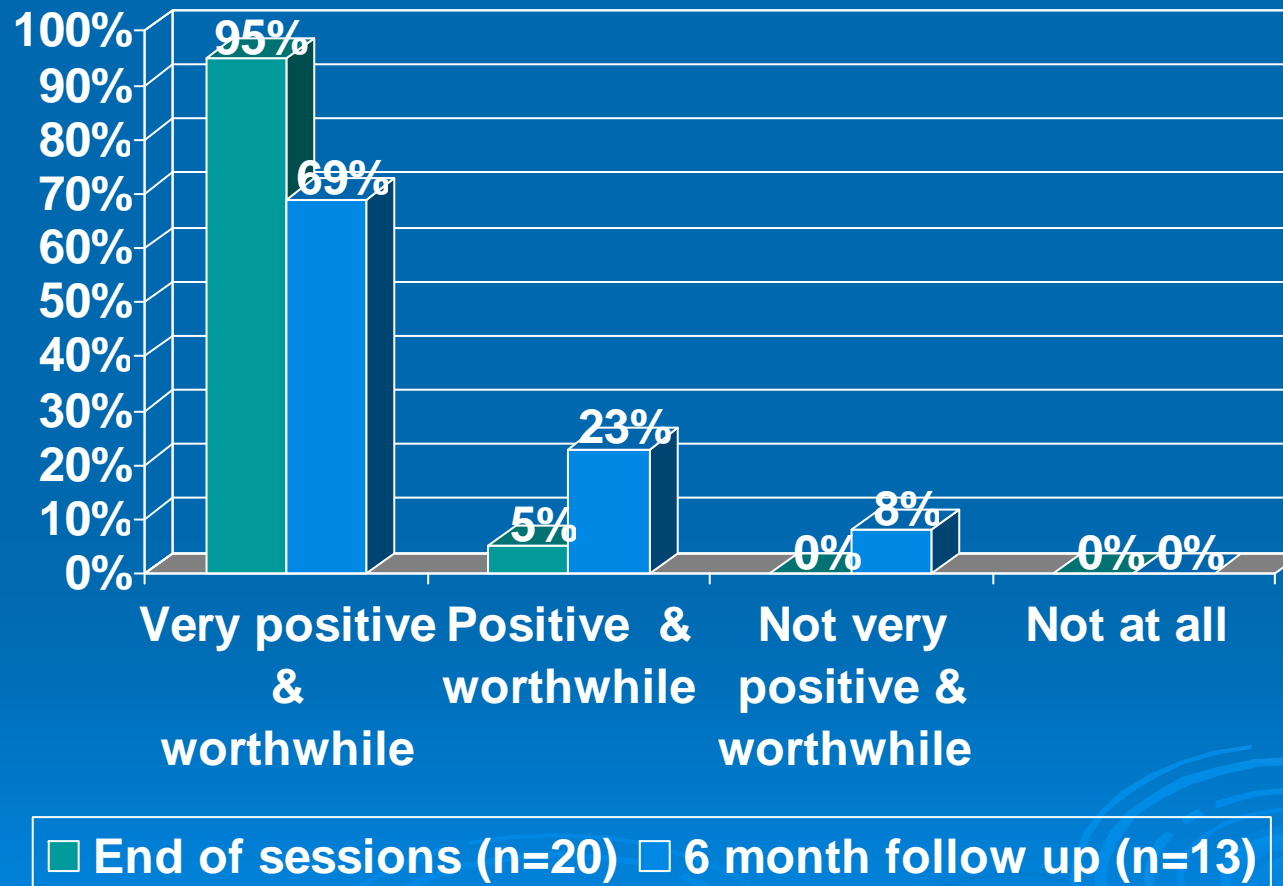


# Satisfaction with PiP overall?

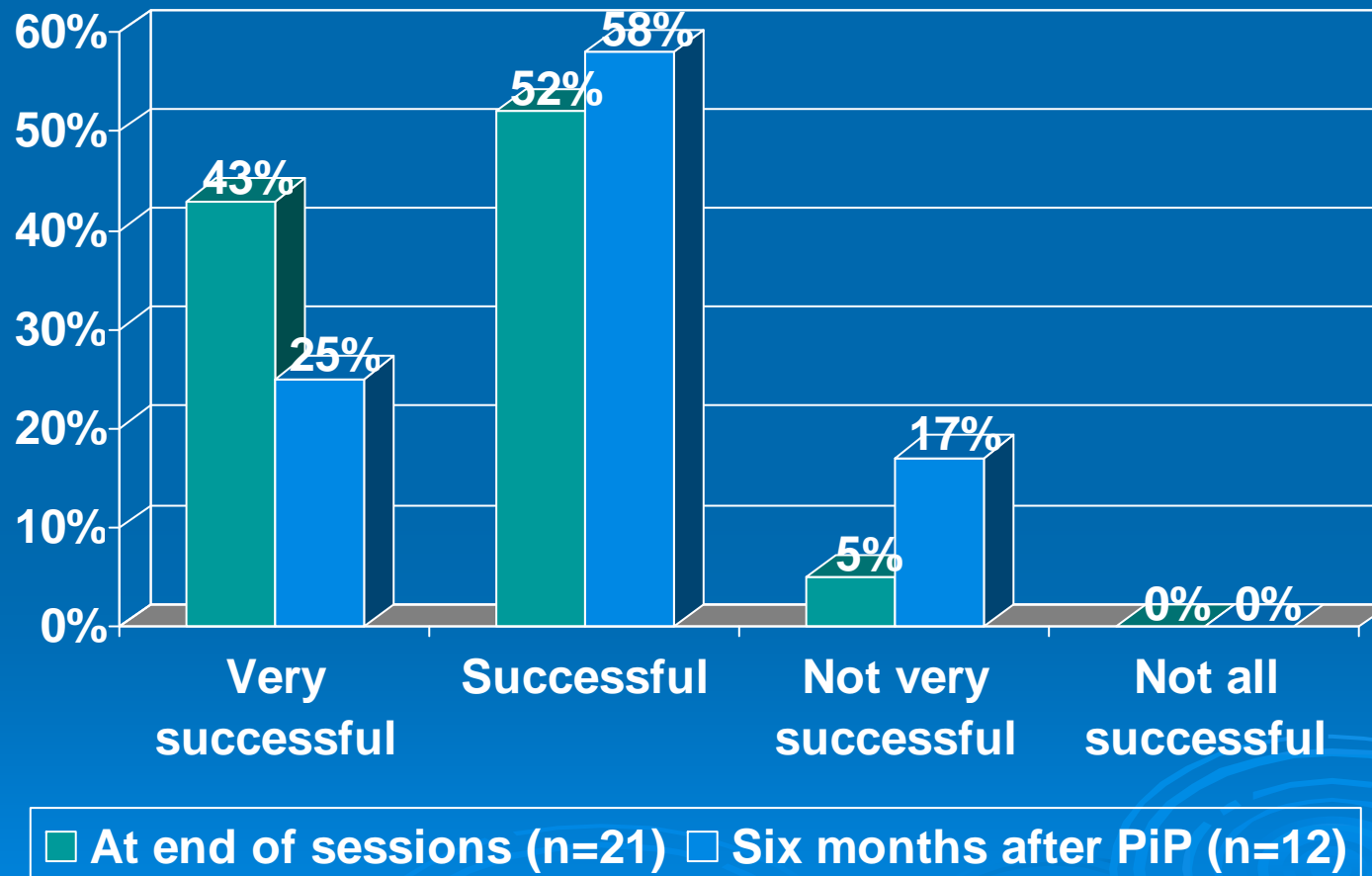


■ End of sessions (n=20) □ 6 month follow up (n=13)

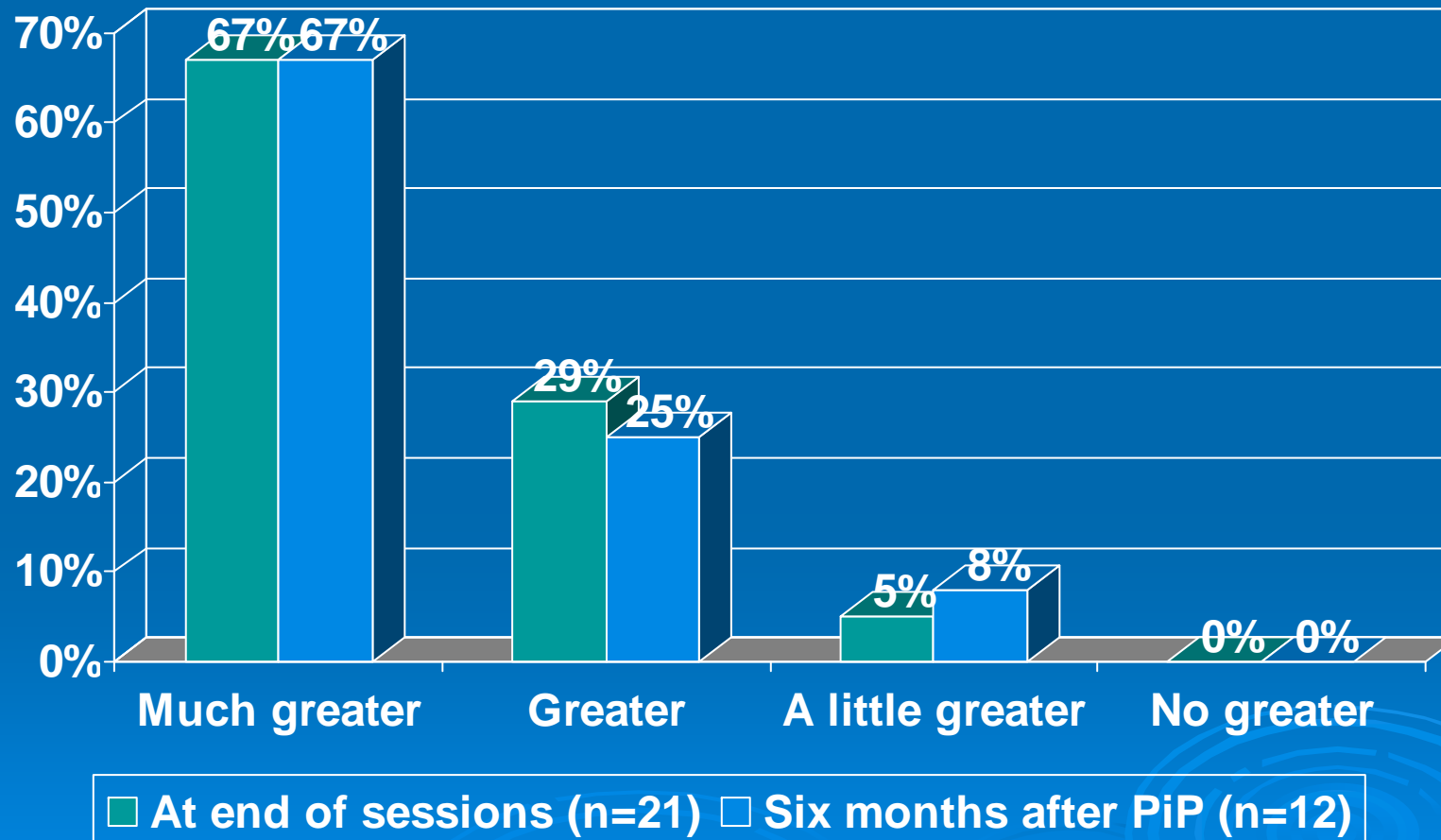
# Experience of program?



# Success in achieving and maintaining goals?



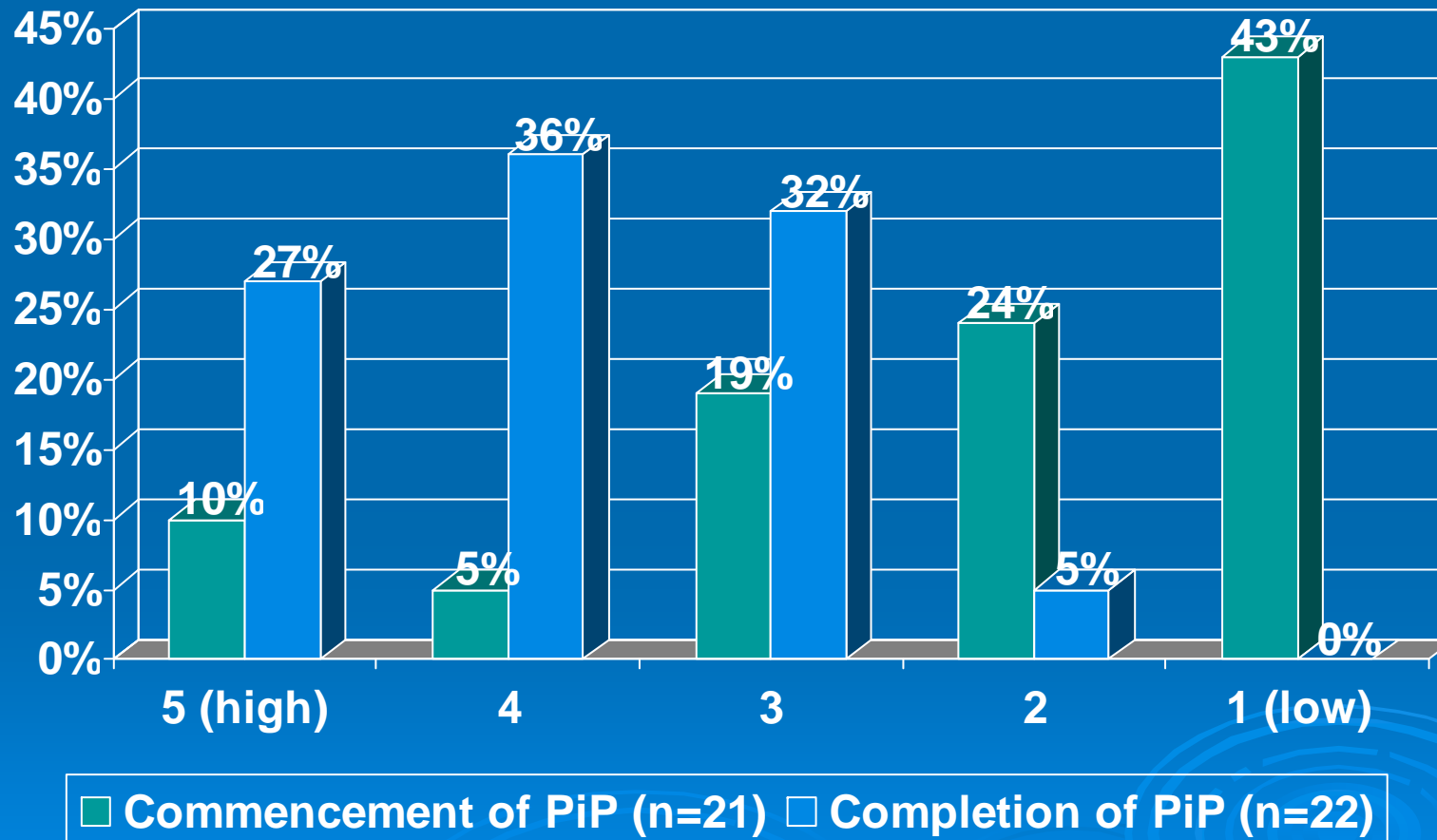
# Greater understanding of child's needs?



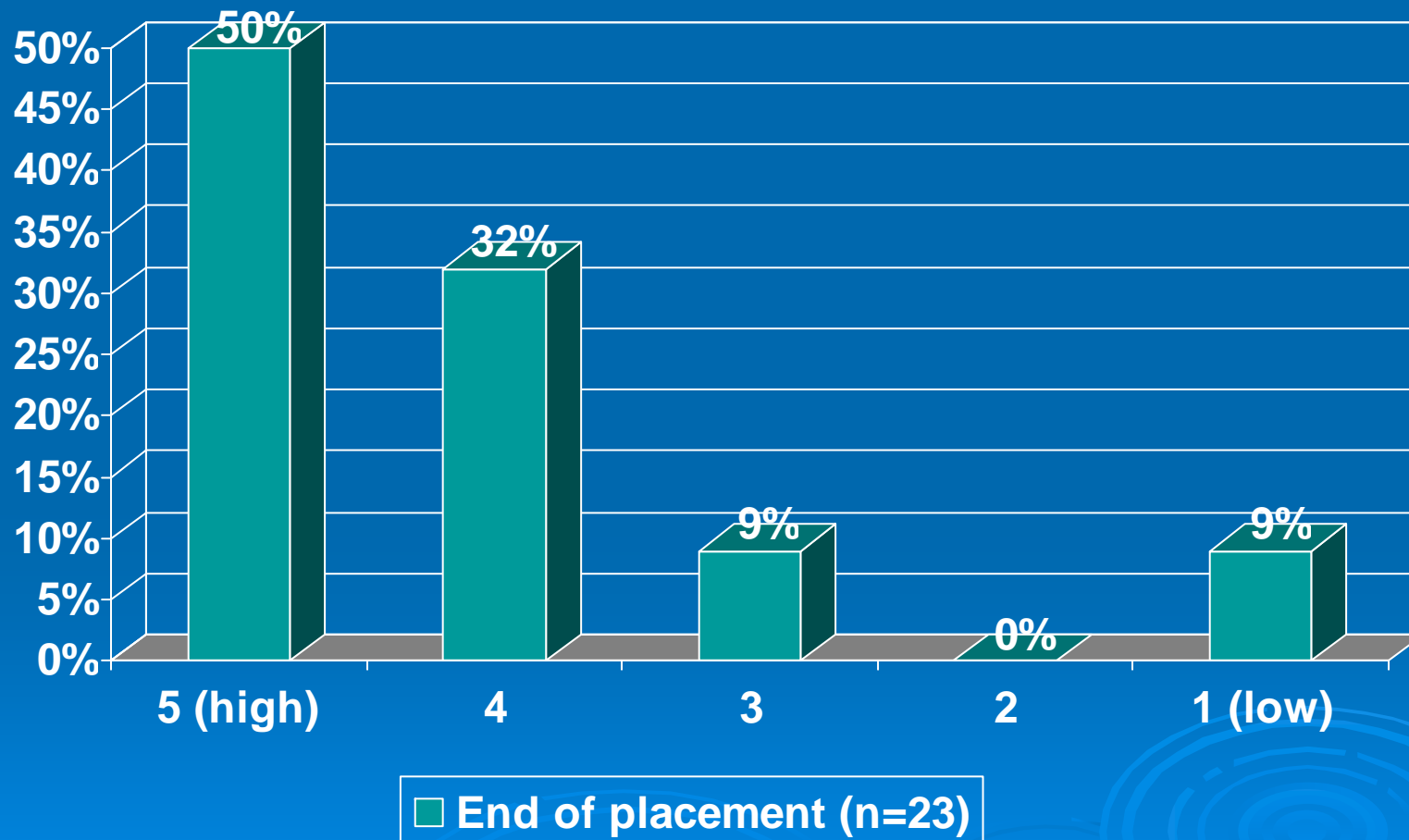
# Confident or very confident in...?



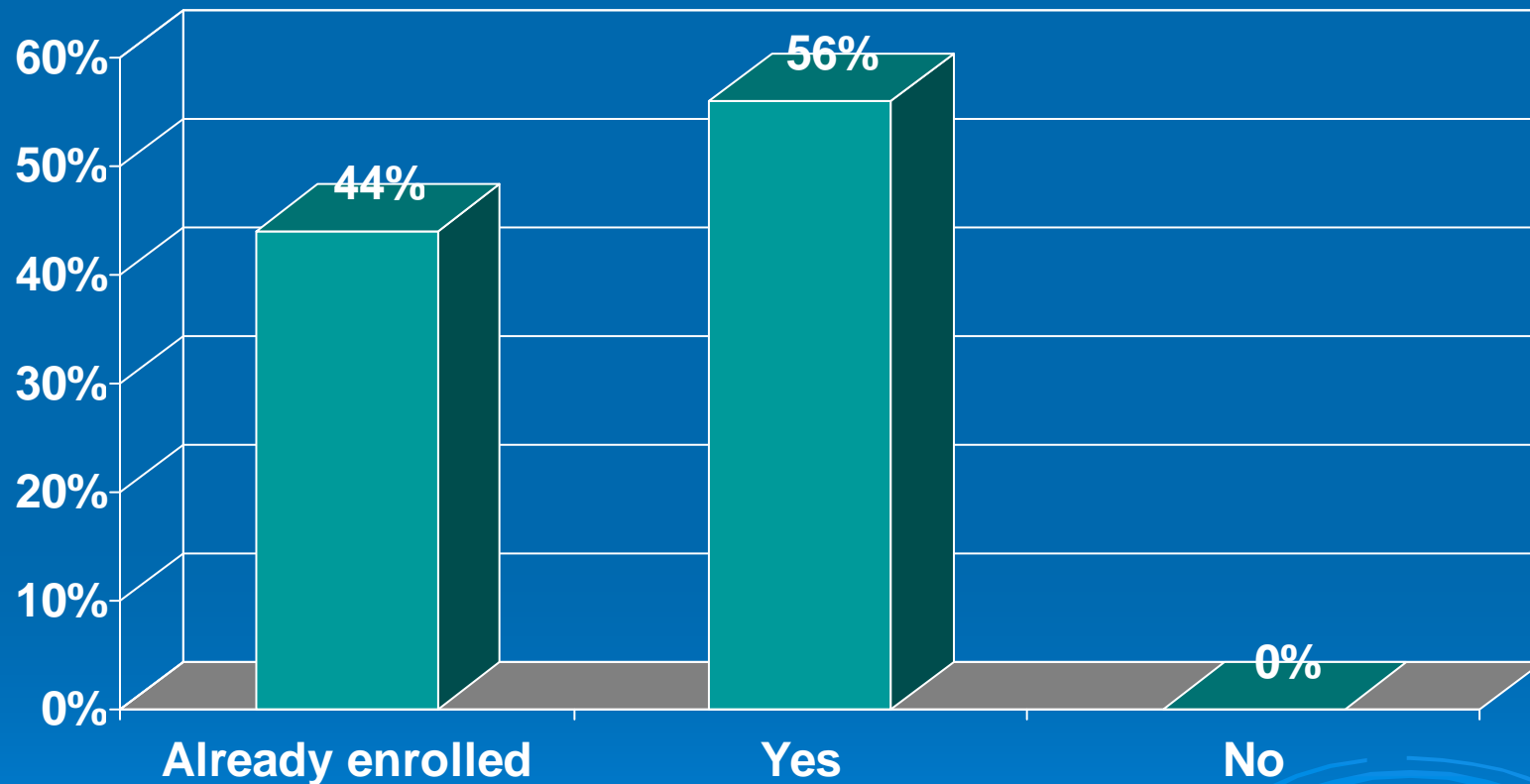
# Mentors perception of parent's confidence?



# Mentors perception of benefit for child?

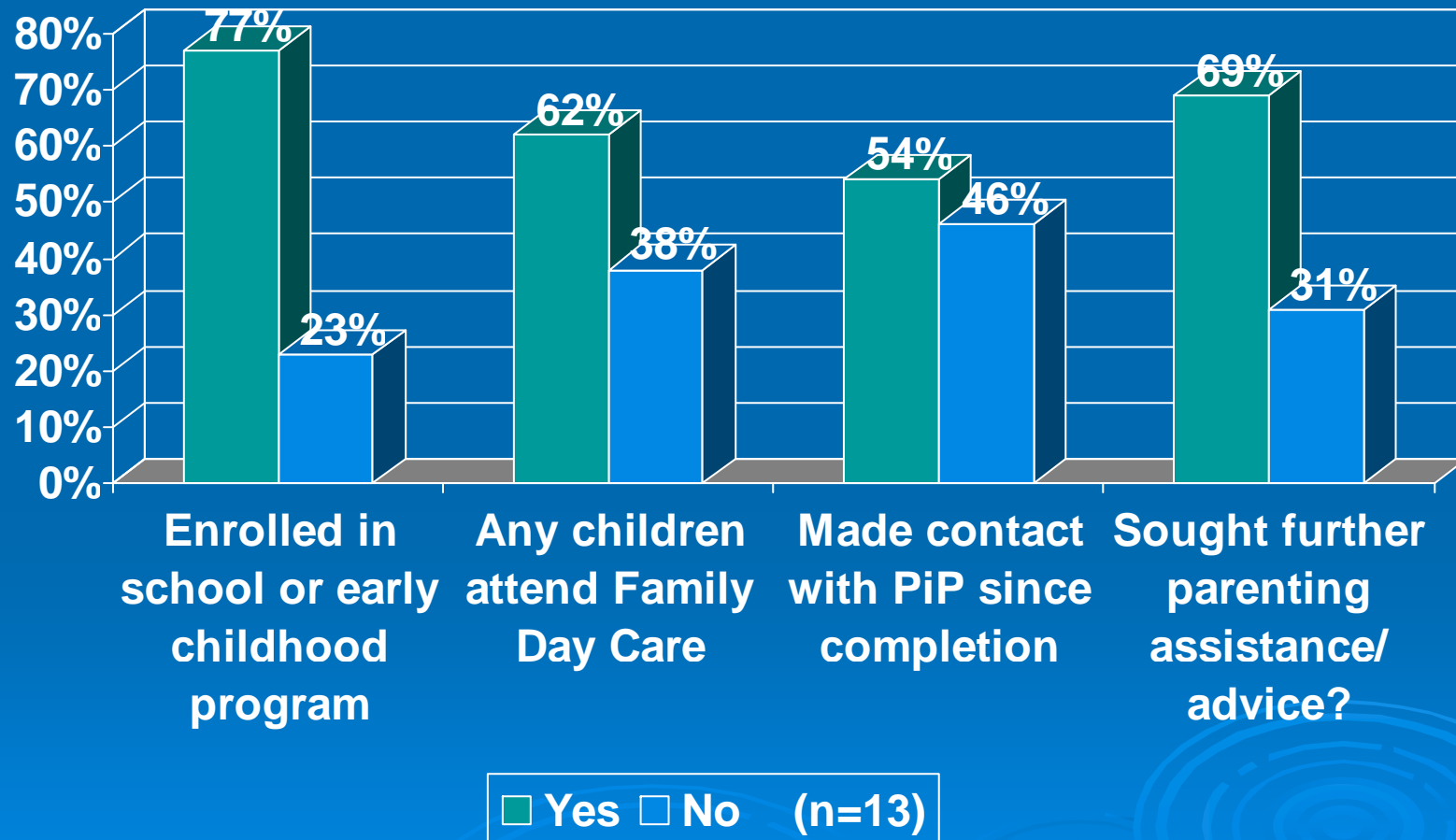


# Planning to enrol in FDC (end of placement)

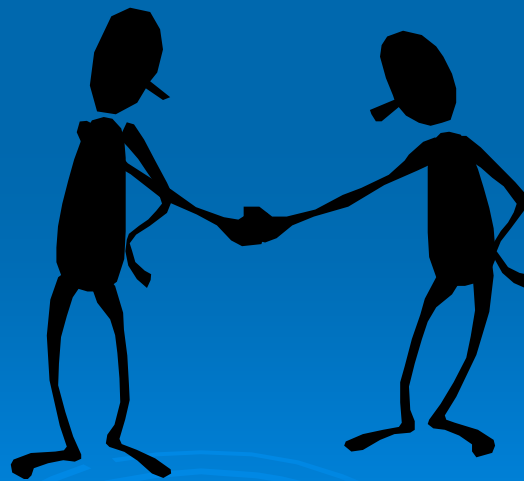


(n=16)

# External support 6 months after



# Partners in Parenting in My Family Day Care Home



# Family Day Care Resources

- Myself and my skills and training
- My personal experiences
- Resource folders
- Child care environment
- Expertise of the coordination unit
- Other agencies



# How I Run The Program

- Introduce myself / background
- My Qualifications
- My Training
- Offer advice
- Takes time
- Offer techniques & strategies



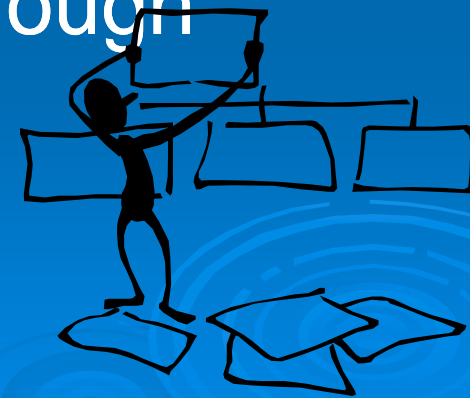
# Case Study

- Single mother living with three boys under five years
- Living at parents residence
- Domestic violence



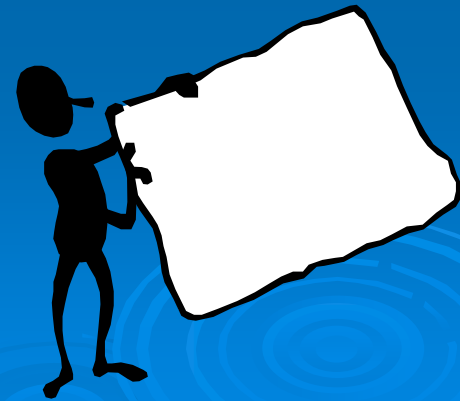
# Goals

- Manage child's aggressive behaviour
- Instructions in a positive manner, to encourage compliance
- Effective behaviour management techniques
- Consistent and following through
- Toilet train the child



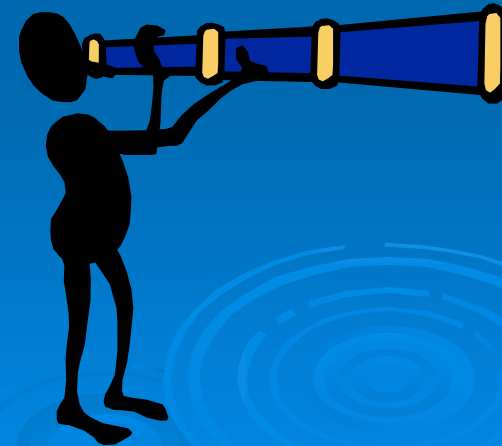
# Placement Starts

- General overview of child development
- General handouts
- Specific handouts
- Structure and routine
- Strategies and techniques
- Homework



# Placement Continues

- Overview of week
- Strategies reinforced and role model
- New strategies
- Ask questions and observe
- Encourage to practice
- Tutored
- Role play



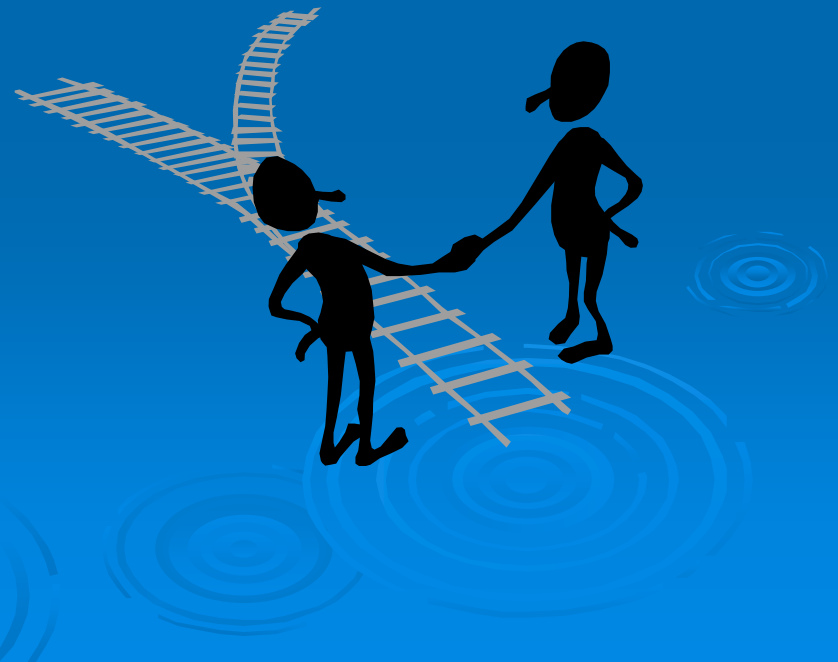
# End of Placement

- Review goals
- Achieve or not
- Why or why not
- Further strategies
- Evaluation and feedback



# My Role

- Encouragement and mentor
- All of goals achieved



# Successful Placement

- Numerous Goals
- Overwhelming
- Morning tea
- Breakthrough
- Successes

